

How to configure the Will'tek 9101 Spectrum Analyzer with OASIS

Introduction

This application note describes the procedure for connecting the Will'tek 9101 spectrum analyzer to a



Figure 1. The Will'tek 9101 Spectrum Analyzer

computer running the OASIS spectrum management software.

Requirements

The Will'tek 9101 spectrum analyzer (refer to the release notes for firmware requirements) is designed to communicate to OASIS through the PC control interface Ethernet/LAN. Be sure to have the most current OASIS driver for this instrument.

Step 1. Power-Down the System

Power off both the Will'tek 9101 spectrum analyzer and the computer terminal running the OASIS spectrum management software.



Step 2. Connecting to the Will'tek 9101

Connect the Ethernet/LAN interface crossover cable to the Will'tek 9101 spectrum analyzer. Set the IP address to be compatible with your internal sub mask (Contact your system administrator to select a compatible IP address).



For more information about setting the IP address consult your instrument documentation.

If you plan on connecting through a hub click [here](#).

Step 3. Connecting to the Computer

Connect the other end of the Ethernet/LAN interface cable to the computer running the OASIS spectrum management software.

If you need help installing an Ethernet/LAN interface in the computer running OASIS click [here](#).

Step 4. Power-Up the System

Power-Up the Will'tek 9101 spectrum analyzer followed by the computer terminal that is running OASIS.



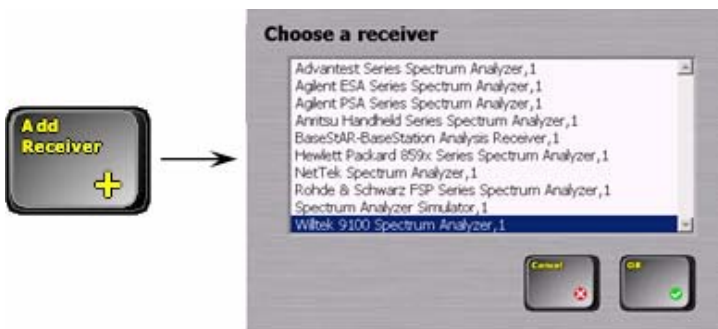
Step 5. Run OASIS

Run OASIS. Click on **Frequency** -> **Receiver Setup** -> **Configure Receivers** and select **OK** when prompted to pause data acquisition.



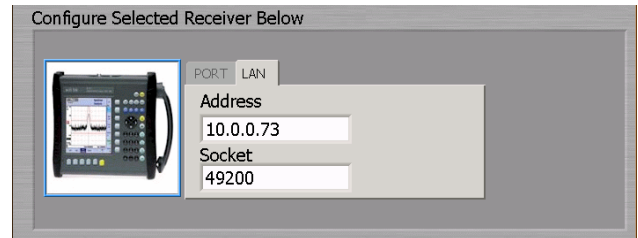
Step 6. Add the Will'tek 9101

Click on **Add Receiver** and select the **Will'tek 9100 Spectrum Analyzer, 1**.



Step 7. Enter the Address

Enter the Ethernet/LAN IP address and Socket of the Will'tek 9101 spectrum analyzer on the Receiver Configuration screen.



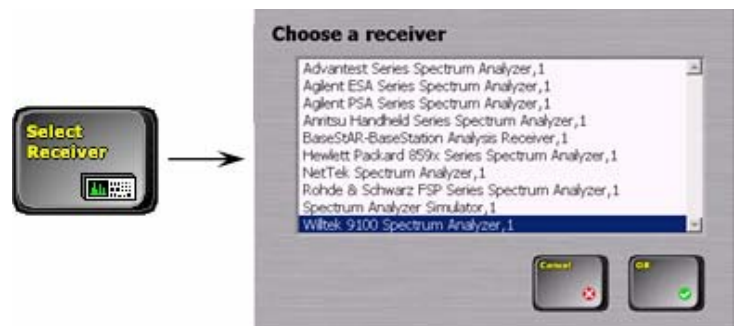
Step 8. Check the Will'tek 9101

Press **Check Receiver** button. If there is an error that appears in the Receiver Configuration screen, please consult the Receiver Configuration Troubleshooting Guide otherwise press the **OK** button.



Step 9. Select the Will'tek 9101

Once the instrument is added, press the **Select Receiver** button and select **Will'tek 9100 Spectrum Analyzer, 1**.



For More Help

If further assistance is needed contact Summitek Instruments.

URL: www.summitekinstruments.com/contact.html

Phone: 1.303.768.8080

Fax: 1.303.768.8181