

How to configure the Tektronix NetTek Series Spectrum Analyzer with OASIS

Introduction

This application note describes the procedure for connecting the Tektronix NetTek series spectrum



Figure 1. The Tektronix NetTek series Spectrum Analyzer

analyzer to a computer running the OASIS spectrum management software.

Requirements

The Tektronix NetTek series spectrum analyzer (refer to the release notes for firmware requirements) is designed to communicate to OASIS through the PC control interface Ethernet/LAN. Be sure to have the most current OASIS driver for this instrument.

Step 1. Power-Down the System

Power off both the Tektronix NetTek series spectrum analyzer and the computer terminal running the OASIS spectrum management software.

Step 2. Connecting to the Tektronix NetTek

Connect the Ethernet/LAN interface cable to the Tektronix NetTek series spectrum analyzer. Set the TCP-IP address to the desired address.

For more information about setting the TCP-IP address consult your instrument documentation.

Step 3. Connecting to the Computer

Connect the other end of the Ethernet/LAN interface cable to the computer running the OASIS spectrum management software.

If you need help installing an Ethernet/LAN interface in the computer running OASIS click [here](#).

Step 4. Power-Up the System

Power-Up the Tektronix NetTek series spectrum analyzer followed by the computer terminal that is running OASIS.

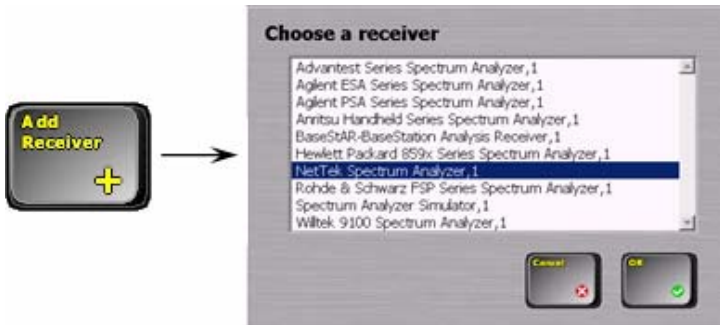
Step 5. Run OASIS

Run OASIS. Click on **Frequency -> Receiver Setup -> Configure Receivers** and select **OK** when prompted to pause data acquisition.



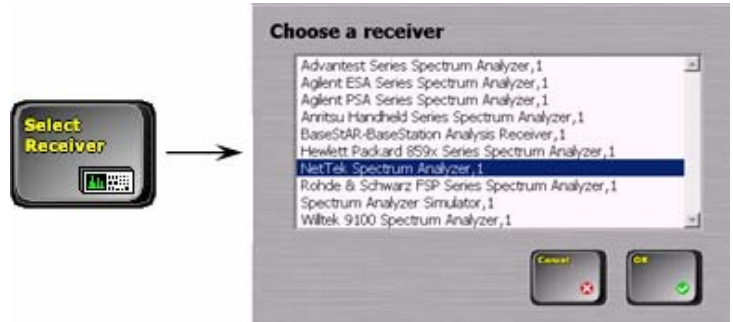
Step 6. Add the Tektronix NetTek

Click on **Add Receiver** and select the **NetTek Series Spectrum Analyzer, 1**.



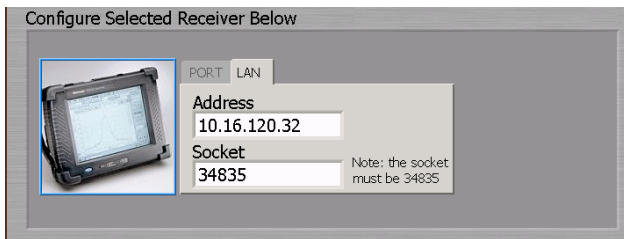
Step 9. Select the Tektronix NetTek

Once the instrument is added, press the **Select Receiver** button and select **NetTek Series Spectrum Analyzer, 1**.



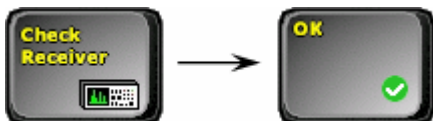
Step 7. Select the Address

Enter the Ethernet/LAN IP address and Socket of the Tektronix NetTek series spectrum analyzer on the Receiver Configuration screen.



Step 8. Check the Tektronix NetTek

Press **Check Receiver** button. If there is an error that appears in the Receiver Configuration screen, please consult the Receiver Configuration Troubleshooting Guide otherwise press the **OK** button.



For More Help

If further assistance is needed contact Summitek Instruments.

URL: www.summittekinstruments.com/contact.html

Phone: 1.303.768.8080

Fax: 1.303.768.8181