

## How to configure the Anritsu Spectrum Master and Anritsu Site Master Spectrum Analyzers with OASIS

### Introduction

This application note describes the procedure for



Figure 1. The Anritsu Handheld Series Spectrum Analyzer

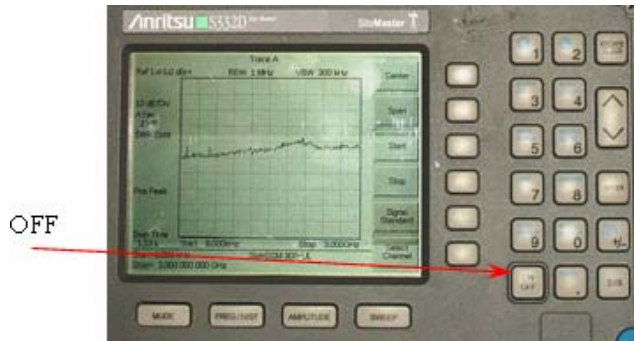
connecting an Anritsu Handheld Series spectrum analyzer to a computer running the OASIS spectrum management software.

### Requirements

The Anritsu MS 2711B, MS 2711D, MT 8212B and S 332D spectrum analyzers (refer to the release notes for firmware requirements) are designed to communicate to OASIS through the PC control interface RS-232. Be sure to have the most current OASIS driver for this instrument.

### Step 1. Power-Down the System

Power off both the Anritsu spectrum analyzer and the computer terminal running the OASIS spectrum management software.



### Step 2. Connecting to the Anritsu

Connect the RS-232 interface cable to the Anritsu spectrum analyzer.

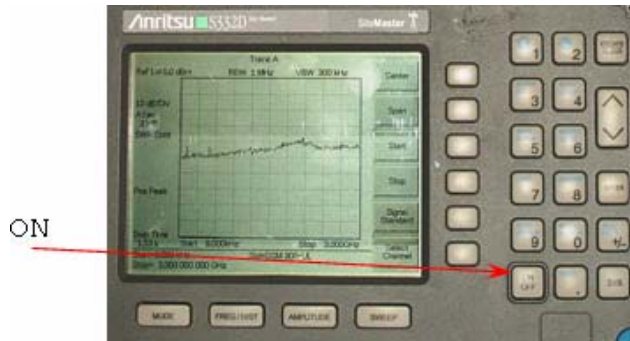


### Step 3. Connecting to the Computer

Connect the other end of the RS-232 interface cable to the computer running the OASIS spectrum management software.

### Step 4. Power-Up the System

Power-Up the Anritsu spectrum analyzer followed by the computer terminal that is running OASIS.



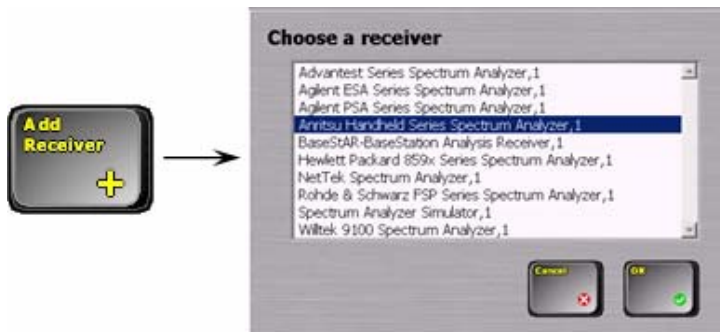
### Step 5. Run OASIS

Run OASIS. Click on **Frequency** -> **Receiver Setup** -> **Configure Receivers** and select **OK** when prompted to pause data acquisition.



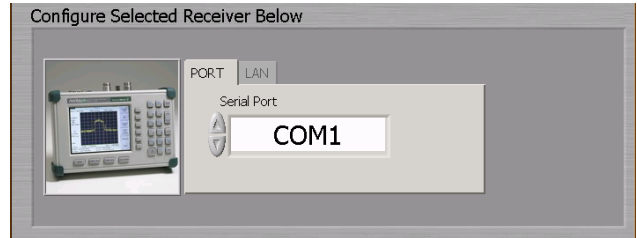
### Step 6. Add the Anritsu Handheld

Click on **Add Receiver** and select the **Anritsu Handheld Series Spectrum Analyzer, 1**.



### Step 7. Select the Port

Select the RS-232 COM port of the Anritsu spectrum analyzer by pressing the up and down arrows on the Receiver Configuration.



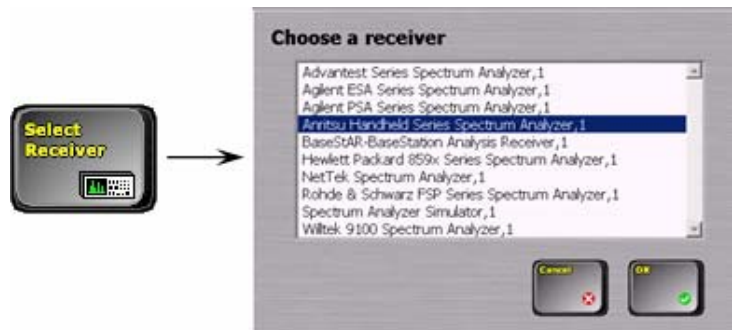
### Step 8. Check the Anritsu Handheld

Press **Check Receiver** button. If there is an error that appears in the Receiver Configuration screen, please consult the Receiver Configuration Troubleshooting Guide otherwise press the **OK** button.



### Step 9. Select the Anritsu Handheld

Once the instrument is added, press the **Select Receiver** button and select **Anritsu Handheld Series Spectrum Analyzer, 1**.



### *For More Help*

If further assistance is needed contact Summitek Instruments.

URL: [www.summitekinstruments.com/contact.html](http://www.summitekinstruments.com/contact.html)

Phone: 1.303.768.8080

Fax: 1.303.768.8181