

## *How to configure the Anritsu MS-2721A Spectrum Master with OASIS*

### *Introduction*

This application note describes the procedure for connecting an Anritsu Handheld Series spectrum analyzer to a computer running the OASIS spectrum management software.

**Figure 1. The Anritsu Handheld Series Spectrum Analyzer**

### *Requirements*

The Anritsu [MS 2721A](#), spectrum analyzer (refer to the release notes for firmware requirements) are designed to communicate to OASIS through the Ethernet interface. Be sure to have the most current OASIS driver for this instrument.

### *Step 1. Power-Down the System*

Power off both the Anritsu spectrum analyzer and the computer terminal running the OASIS spectrum management software.

### *Step 2. Connecting to the Anritsu*

Connect a crossover Ethernet cable to the Anritsu spectrum analyzer.

### *Step 3. Connecting to the Computer*

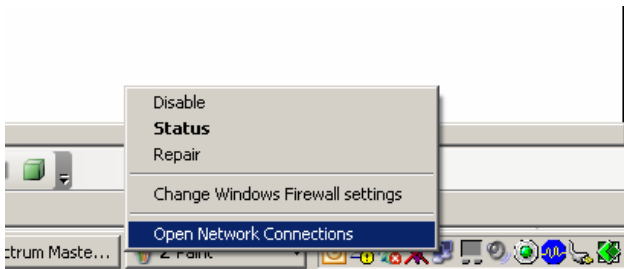
Connect the other end of the Ethernet crossover cable to the computer running the OASIS spectrum management software.

#### Step 4. Power-Up the System

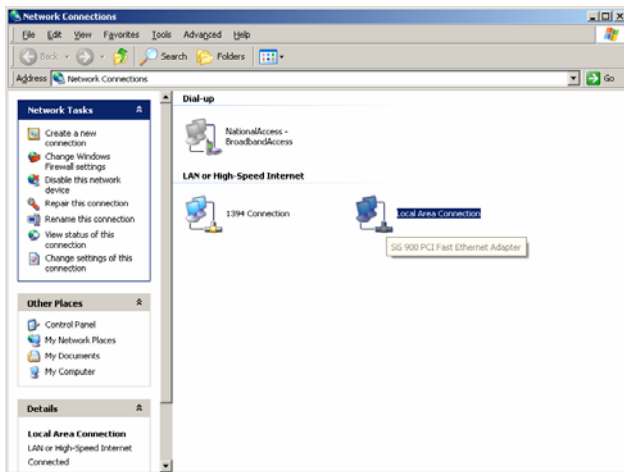
Power-Up the Anritsu spectrum analyzer followed by the computer terminal that is running OASIS.

#### Step 5. Configure the IP Address on the computer

Right Click on the  network icon in the system tray on lower right corner of the Windows task bar. Then click on **Open Network Connections**.

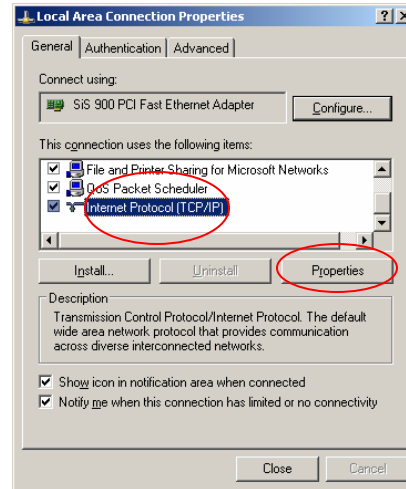


Then Right Click on the **Local Area Connection** icon.

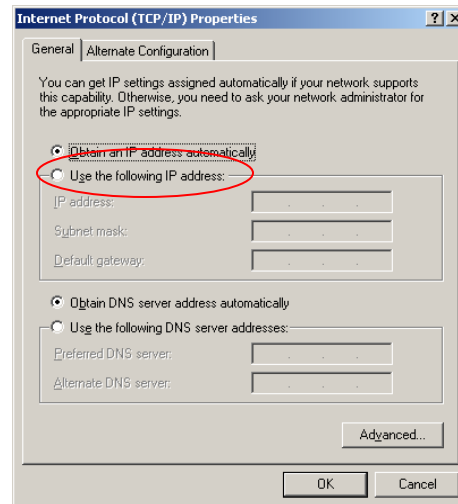


Select **Properties**.

Then select the **Internet Protocol (TCP/IP)** in the drop down box, and click on **Properties**.



Write down the current configurations which are set for your machine (if you normally use a TCP/IP network connection) as you will want to reset your computer for later use back on a network.



Click to enable the **Use the following IP Address:**

In the **IP address** field enter the following: **10.0.0.2**

In the **Subnet mask** field enter the following: **255.255.255.0**

In the **Default Gateway** field, leave this setting blank.

To accept the changes click on the **OK** button.

**Step 6. Configure the MS-2721 Ethernet port.**

With the power turned on, press the **Shift** key on the instrument and then the **System** (the number 8 key). This will enable the system menu on the right sidebar of the instrument.

Using the Soft Keys on the analyzer, press the lower right Soft Key to the right of the **System Options** selection in the Function menu.

In the System Options Function Menu, Press the second Soft Key down corresponding to the **Ethernet Config.**

Press the **Type** Soft Key until the word **Manual** is selected in the first Function Menu option.

Press the **Field** Soft Key to select the various configuration parameters to set. Using the **First, Second, Third** and **Fourth Octet** keys, move across the fields to fill in the following parameters:

**IP: 10.0.0.1**

**Gateway: 0.0.0.0**

**Subnet: 255.255.255.0**

When entered, press the **Enter** button on the keypad. Power off and then power on the instrument.

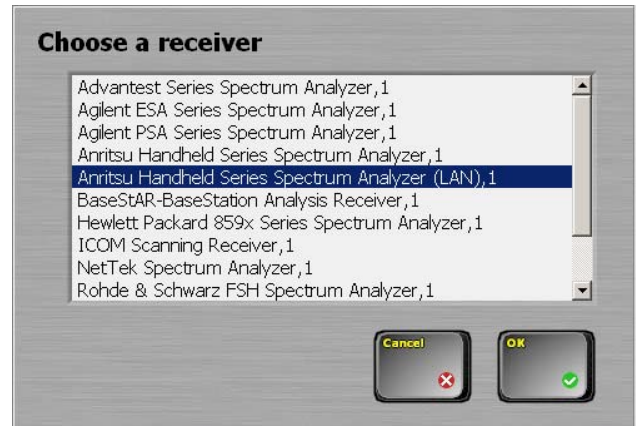
**Step 7. Run OASIS**

Run OASIS. Click on **Frequency** -> **Receiver Setup** -> **Configure Receivers** and select **OK** when prompted to pause data acquisition.



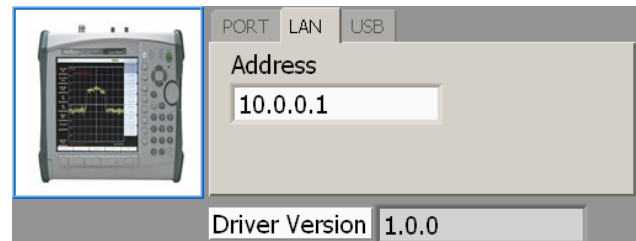
**Step 6. Add the Anritsu Handheld**

Click on **Add Receiver** and select the **Anritsu Handheld Series Spectrum Analyzer (LAN), 1**.



**Step 8. Enter the IP Address**

Enter the IP Address of the instrument (the same that was set in Step 6).



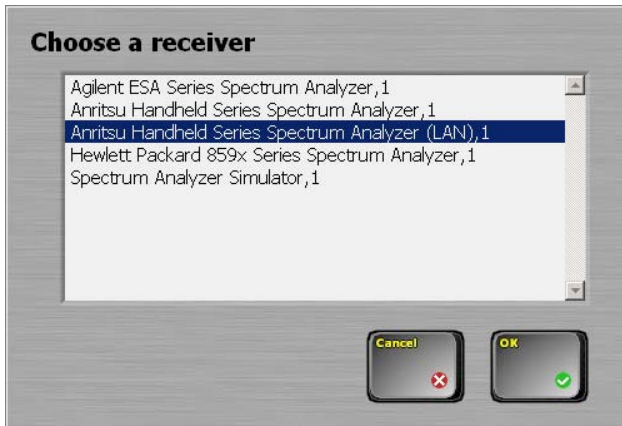
**Step 9. Check the Anritsu Handheld**

Press **Check Receiver** button. If there is an error that appears in the Receiver Configuration screen, please consult the Receiver Configuration Troubleshooting Guide otherwise press the **OK** button.



**Step 9. Select the Anritsu Handheld**

Once the instrument is added, press the **Select Receiver** button and select **Anritsu Handheld Series Spectrum Analyzer (LAN), 1** and press **OK**.



### *For More Help*

If further assistance is needed contact Summitek Instruments.

URL: [www.summitekinstruments.com/contact.html](http://www.summitekinstruments.com/contact.html)

Phone: 1.303.768.8080

Fax: 1.303.768.8181