

How to configure the Agilent PSA Series Spectrum Analyzer with OASIS

Introduction

This application note describes the procedure for

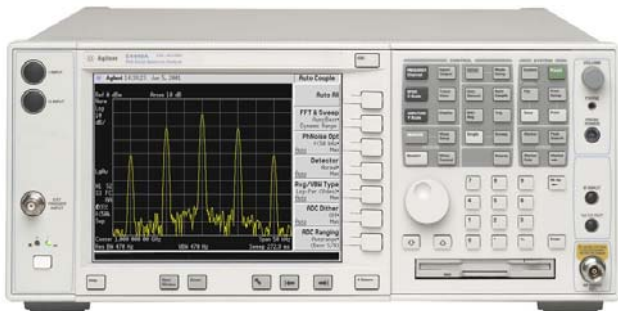


Figure 1. The Agilent PSA Series Spectrum Analyzer

connecting the Agilent PSA series spectrum analyzer to a computer running the OASIS spectrum management software.

Requirements

The Agilent PSA series spectrum analyzer (refer to the release notes for firmware requirements) is designed to communicate to OASIS through the PC control interfaces GPIB or Ethernet/LAN. Be sure to have the most current OASIS driver for this instrument.

Step 1. Power-Down the System

Power off both the Agilent PSA series spectrum analyzer and the computer terminal running the OASIS spectrum management software.



Step 2. Connecting to the Agilent PSA

Connect the GPIB or Ethernet/LAN interface crossover cable to the Agilent PSA series spectrum analyzer. If using a GPIB connection set the GPIB address to the desired address. If using an Ethernet/LAN connection set the IP address to be compatible with your internal sub mask (Contact your system administrator to select a compatible IP address).

For more information about setting the GPIB or IP address consult your instrument documentation.

If you plan on connecting through a hub click [here](#).

Step 3. Connecting to the Computer

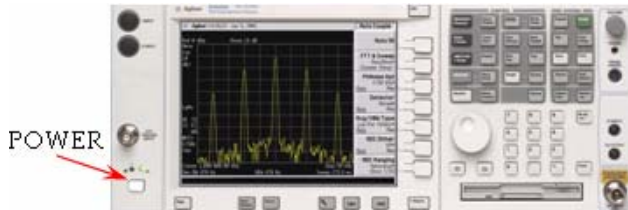
Connect the other end of the GPIB or Ethernet/LAN interface cable to the computer running the OASIS spectrum management software.

If you need help installing a GPIB interface in the computer running OASIS click [here](#).

If you need help installing an Ethernet/LAN interface in the computer running OASIS click [here](#).

Step 4. Power-Up the System

Power-Up the Agilent PSA series spectrum analyzer followed by the computer terminal that is running OASIS.



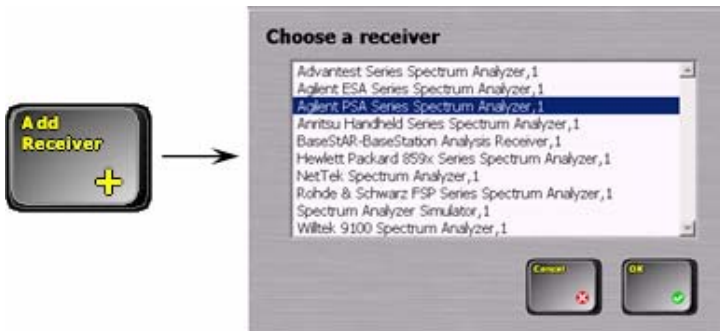
Step 5. Run OASIS

Run OASIS. Click on **Frequency** -> **Receiver Setup** -> **Configure Receivers** and select OK when prompted to pause data acquisition.



Step 6. Add the Agilent PSA

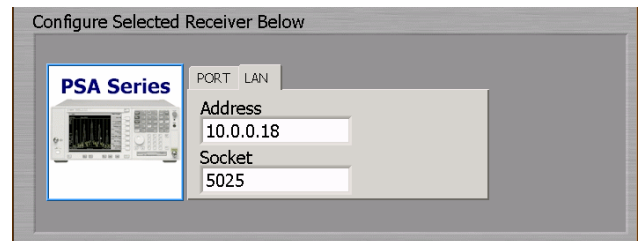
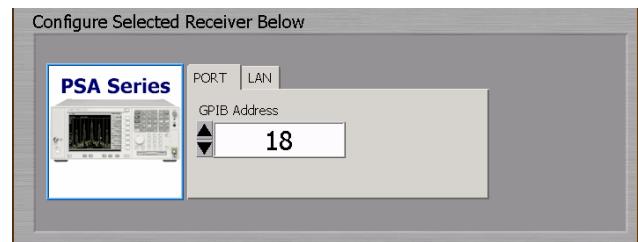
Click on **Add Receiver** and select the **Agilent PSA Series Spectrum Analyzer, 1**.



Step 7. Select the Address

Select the GPIB address of the Agilent PSA series spectrum analyzer by pressing the up and down arrows on the Receiver Configuration screen.

If connecting via Ethernet/LAN, select the tab marked LAN and then enter the Ethernet/LAN IP address and Socket of the Agilent PSA series spectrum analyzer on the Receiver Configuration screen.



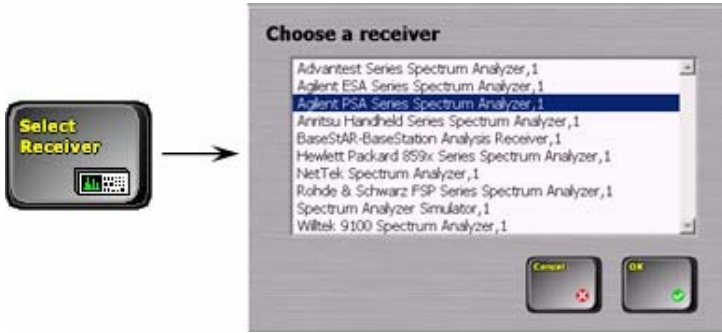
Step 8. Check the Agilent PSA

Press **Check Receiver** button. If there is an error that appears in the Receiver Configuration screen, please consult the Receiver Configuration Troubleshooting Guide otherwise press the **OK** button.



Step 9. Select the Agilent PSA

Once the instrument is added, press the **Select Receiver** button and select **Agilent PSA Series Spectrum Analyzer, 1**.



For More Help

If further assistance is needed contact Summittek Instruments.

URL: www.summittekinstruments.com/contact.html

Phone: 1.303.768.8080

Fax: 1.303.768.8181