

How to configure the Advantest U3661 Spectrum Analyzer with OASIS

Introduction

This application note describes the procedure for



Figure 1. The Advantest U3661 Spectrum Analyzer

connecting the Advantest U3661 spectrum analyzer to a computer running the OASIS spectrum management software.

Requirements

The Advantest U3661 spectrum analyzer (refer to the release notes for firmware requirements) is designed to communicate to OASIS through the PC control interface GPIB. Be sure to have the most current OASIS driver for this instrument.

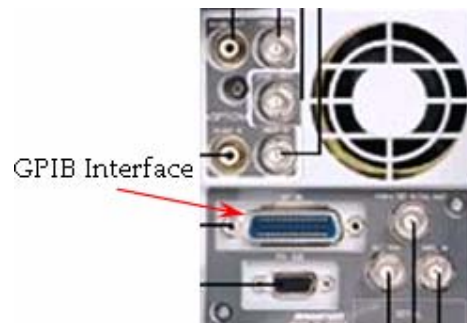
Step 1. Power-Down the System

Power off both the Advantest U3661 spectrum analyzer and the computer terminal running the OASIS spectrum management software.



Step 2. Connecting to the Advantest U3661

Connect the GPIB interface cable to the Advantest U3661 spectrum analyzer. Set the GPIB address to the desired address.



For more information about setting the GPIB address consult your instrument documentation.

Step 3. Connecting to the Computer

Connect the other end of the GPIB interface cable to the computer running the OASIS spectrum management software.

If you need help installing a GPIB interface in the computer running OASIS click [here](#).

Step 4. Activate the Remote Control Port

1. Select the **CONFIG** menu using **<SHIFT><CONFIG>**.
2. Then descend two menu levels using **<NEXT>**, **<NEXT>**.
3. Select **<POWER>**. Check that **<I/O Port On/OFF>** has **ON** highlighted.

Step 5. Power-Up the System

Power-Up the Advantest U3661 spectrum analyzer followed by the computer terminal that is running OASIS.



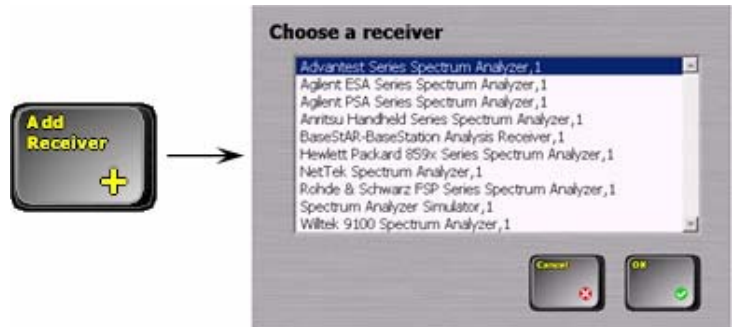
Step 6. Run OASIS

Run OASIS. Click on **Frequency -> Receiver Setup -> Configure Receivers** and select **OK** when prompted to pause data acquisition.



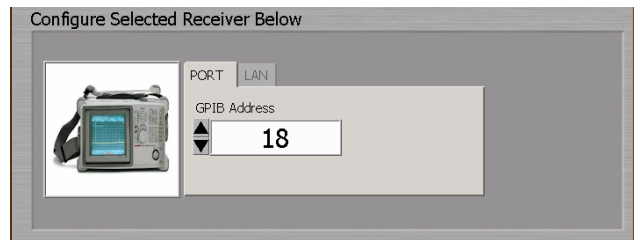
Step 7. Add the Advantest U3661

Click on **Add Receiver** and select the **Advantest Series Spectrum Analyzer, 1**.



Step 8. Select the Address

Select the GPIB address of the Advantest U3661 spectrum analyzer by pressing the up and down arrows on the Receiver Configuration screen.



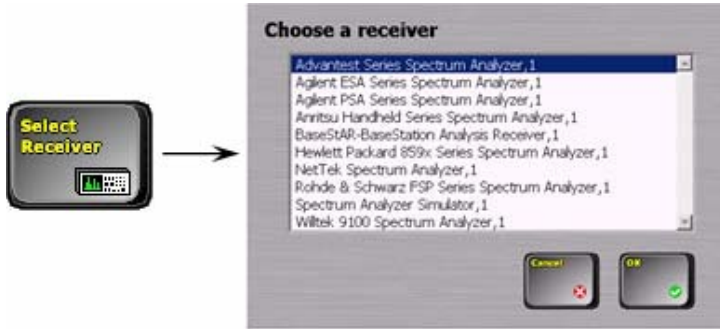
Step 9. Check the Advantest U3661

Press **Check Receiver** button. If there is an error that appears in the Receiver Configuration screen, please consult the Receiver Configuration Troubleshooting Guide otherwise press the **OK** button.



Step 10. Select the Advantest U3661

Once the instrument is added, press the **Select Receiver** button and select **Advantest Series Spectrum Analyzer, 1**.



For More Help

If further assistance is needed contact Summittek Instruments.

URL: www.summittekinstruments.com/contact.html

Phone: 1.303.768.8080

Fax: 1.303.768.8181