

## Determining the VISA address for a USB device:

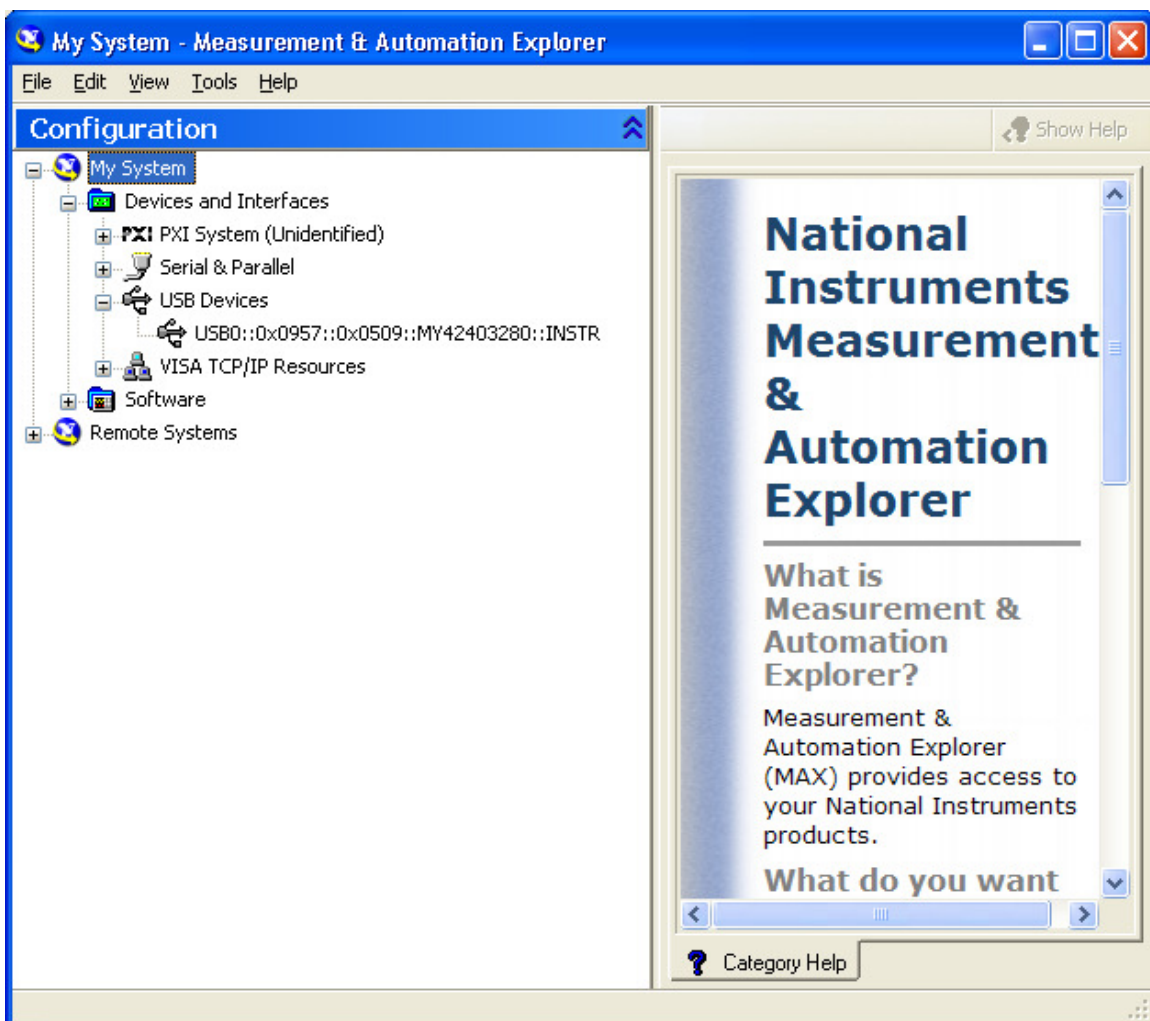
Plug in the Device in to the computer and wait for the device driver to be loaded.

The VISA USB device name is a long string based on the USB bus, the interface type and usually the serial number of the instrument.

A sample VISA address is below:

USB0::0x0957::0x0509::MY42403280::INSTR

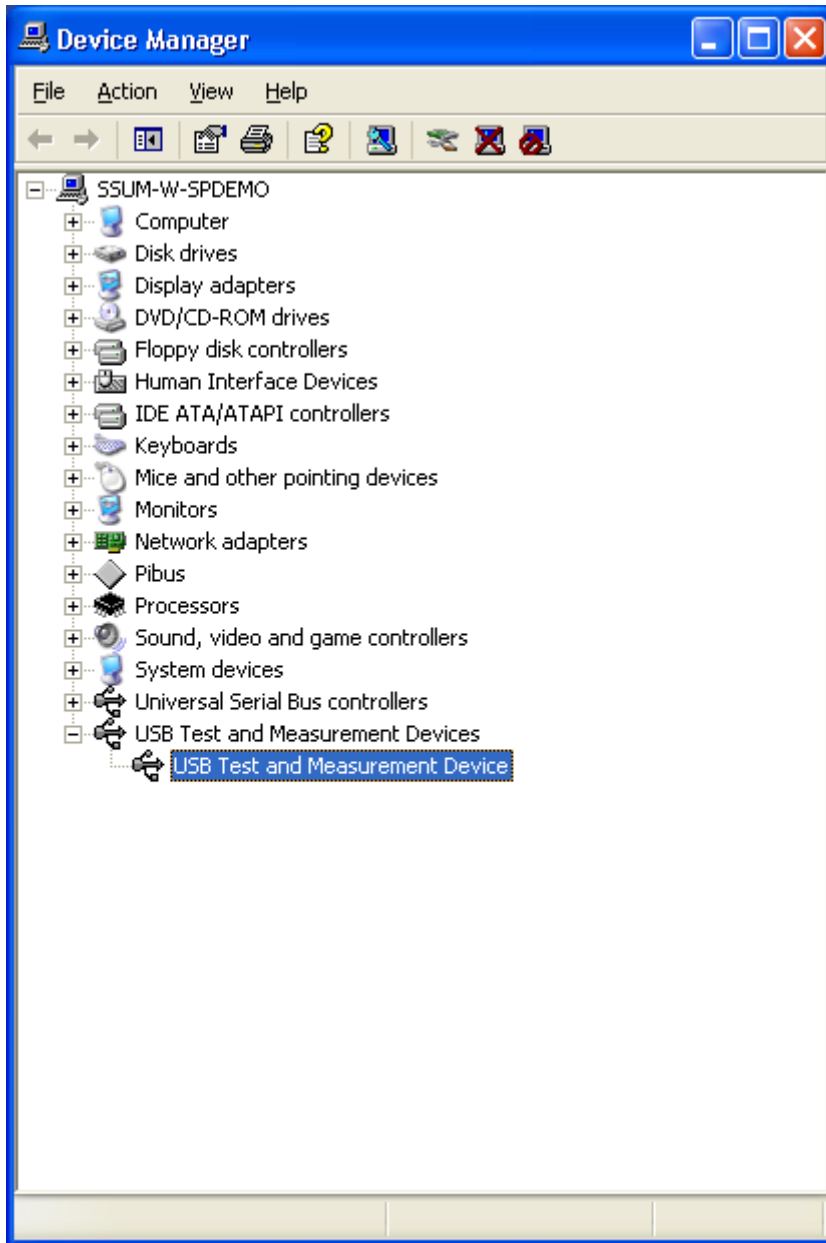
The easiest way to get the address is to open the National Instrument Measurement and Automation explorer. Using the Tree view, select USB devices and you can view the VISA address in the tree.



It is also possible to use the Device manager of the computer.

Start Menu → Control Panel → System → Device Manager

Open the “USB Test and Measurement Devices” tree element and show the properties:



Select the Details tab. The various numbers required are listed under the “Device Instance ID.”

Using the same VISA address as before:

USB0::0x0957::0x0509::MY42403280::INSTR

The second part is VID\_0957 → 0x0957.

The third part is PID\_0509 → 0x0509

The fourth part is entered directly.

